

# INSTALLATION GUIDE

**CAVIUS**  
WIRELESS.)))  
ALARM FAMILY



**SMOKE**  
ALARM

Optical smoke alarm device  
Commercial reference: 2106-008  
Developed by CAVIUS

The smoke alarm is designed for private homes.

**PLEASE READ THE INSTALLATION GUIDE CAREFULLY BEFORE INSTALLATION AND RETAIN FOR FUTURE USE.**

## SAFETY INSTRUCTIONS:

The device comes with a 3V lithium battery. Batteries are to be handled with care and battery powered devices should be kept out of reach of children. Do not try to recharge or burn the batteries.

## TECHNICAL INFORMATION:

The maximum number of alarms that can be interlinked within a house group are 32.  
**Please note:** These must be alarms from the CAVIUS WIRELESS.))) ALARM FAMILY

The distance between interlinked alarms depends on the house layout and they should always be tested after installation. It is not advised to get more than 10m distance between two smoke alarms.

Diameter: 78mm. Height: 44mm

The alarm is powered by a non-replaceable 10 year battery (pack of 2 CR123A Lithium batteries). In normal situations, minimum battery life is 10 years, but severe RF interferences may affect battery life of your device.

Certified to EN 14604 : 2005 + AC2008 , EN 3000-220



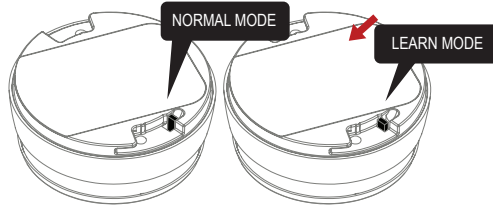
## 1. HOW TO SET UP AND CONNECT ALARMS:

**Please note:** The product label must not be removed as it contains important information regarding the product.

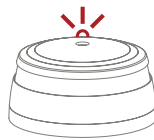
**All alarms** that need to be connected in the house should be put into 'Learn Mode' by sliding

the switch on the back of the alarm to the 'Learn Mode' position.

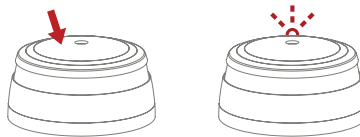
The red LED will light up to indicate that 'Learn Mode' has been selected.



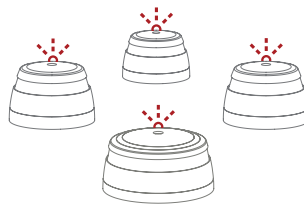
Please note that when the alarms are placed in 'Learn Mode' they can't be inserted into the mounting base.



Press and hold the test button at one alarm only, until it beeps and the LED flashes. This alarm will send out a specific house code to the other alarms.



As the other alarms receive the specific house code, they will also flash the LED light.



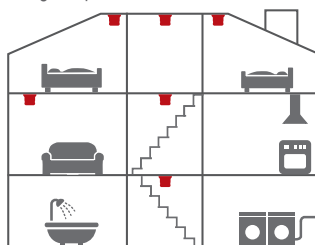
When the red LED light flashes on all alarms, they are connected and **MUST BE SWITCHED OUT OF 'LEARN MODE'** and installed.

Label the original "Learn" alarm in order to easily add new Cavius Wireless Family alarms to the system.

## 2. THE BEST AREAS TO INSTALL THE SMOKE ALARM:

- Install an alarm between possible fire sources and bedrooms as a minimum.
- Install alarms on each floor of the house, in hallways and stairways.

Siting of Optical Smoke alarms



■ Optical

- Alarms in each room such as bed rooms and living rooms. Additional alarms increase the security.

## 3. AREAS WHERE NOT TO INSTALL SMOKE-ALARMS:

- In dusty rooms.
- At the top of a high pointed ceiling, in ceiling corners, and within 30cm of a wall.
- In rooms where the temperature goes outside +4° to 38°C or above 90% relative humidity not condensing.
- In kitchens, garages, laundries, or too close to fireplaces; areas where either dampness, gases or smoke could occur.

Place the alarm where it is reachable in order to test the battery and for maintenance.

## 4. PLACEMENT:

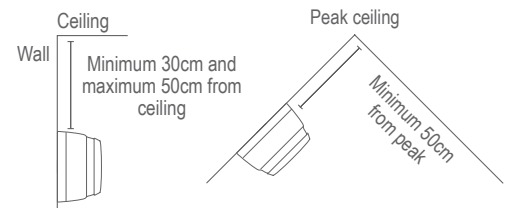
Centrally located ceiling mounted is preferred but if must fit on a wall please consider the following:

### For ceiling installation:

The smoke alarm should be a minimum of 30cm from the wall.



### For cathedral or peak ceiling or wall installation:



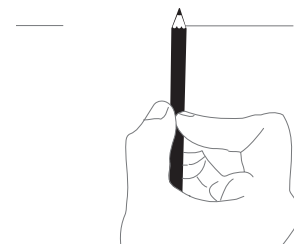
With a minimum of one smoke alarm per floor and a maximum distance between smoke alarms of 10 meters.

## 5. INSTALLING THE SMOKE ALARM:

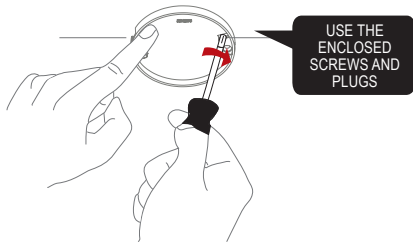
Detach the alarm from the mounting base by twisting counter clockwise.



MARK UP SCREW HOLES WITH A PEN



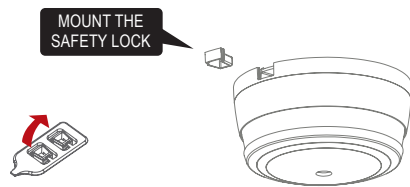
Use the mounting base ring to mark the screw holes on the ceiling or the wall.



Once the mounting base is installed, attach the alarm by twisting clockwise until it clicks.



**6. SAFETY LOCK:**



**7. TEST FUNCTION:**

After installation, and at least once per quarter, test all of your alarms to ensure they are operating correctly and are within range of each other.

It is recommended to check visually every week if the LED flashes correctly (every 48sec.)

**Press the test button on any alarm for at least 10 seconds. This will send out a test signal from the alarm; all other connected alarms should receive the signal within a short time. The alarms will emit a short beep and the LED will flash every 8 seconds for 2 minutes.**

**NOTE:** Test function also allows to send a depleted RF signal to ensure an optimal operation in normal conditions.

When the test signal is sent out, the alarms will respond in two ways:

1. A single beep every 8 seconds indicates that the alarms are connected and functioning.
2. Three short beeps every 8 seconds indicates a smoke sensor fault. The alarm should be cleaned by running the vacuum (on a low setting) around the smoke alarm chamber and tested again.

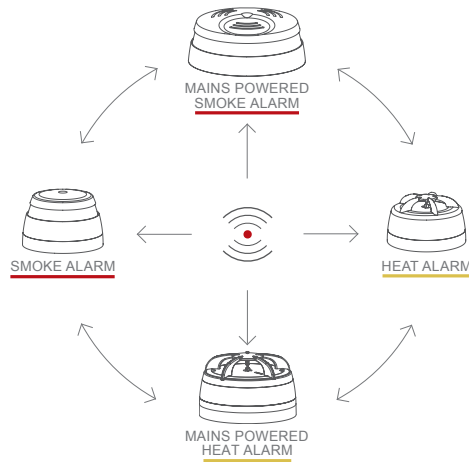
If required this indication can be stopped early on each alarm by a short press of the test button.

**TIP:** It is safe to cover the sound output hole with your finger during the testing to minimize the sound level emitted.

If the problem continues, please visit [www.cavius.com](http://www.cavius.com) for any trouble shooting.

**8. ADD EXTRA DEVICE:**

**WIRELESS**  
ALARM FAMILY



All CAVIUS interconnected alarms within the **WIRELESS** ALARM FAMILY can be added to the system as they run on the same frequency and use the same data protocol. This means that the wireless system can consist of a combination of smoke, heat etc.

Place all alarms into 'Learn Mode' and repeat section 1.

Always test connection to all devices by repeating test function section 7 after adding devices. **9. OTHER INFORMATION:**

Do not paint the alarm.

Disposal: please dispose properly at the end of life. This is electronic waste which should be recycled.

Please note local regulations about information to your insurance company regarding installed smoke alarms.

Complies to the Radio Equipment Directive 2014/53/EU  
RF Frequency: 868 MHz.

Maximum radio-frequency power transmitted: 20 dBm

Full DoC to 2014/53/EU (RED) can be downloaded at [www.cavius.com](http://www.cavius.com)

**WARNING:** All alarms should be assumed as due to actual fire and the dwelling should be evacuated immediately.

**WARNING:** To prevent injury, this apparatus must be permanently fixed to the ceiling/wall in accordance with the installation instructions.

**WARNING:** Batteries shall not be exposed to excessive heat such as shine, fire, or the like. Note the local country regulations regarding installation.

The CE mark affixed to the product confirms compliance with all relevant European directives and harmonized requirements in the EN14604 standard and Construction Products Regulation (CPR) 305/2011 along with the Radio Equipment Directive (RED) 2014/53/EU for all wireless family products.



The CE and RED declaration of conformity and DoP can be downloaded from: <http://www.cavius.com>  
The paper version of the DoP is available free of charge upon request.  
Declared performance 4.1-4.19 + 5.2-5.24: Passed.

All Rights reserved: CAVIUS Aps assumes no responsibility for any errors, which may appear in this manual. Furthermore, CAVIUS Aps reserves the right to alter the hardware, software, and/or specifications detailed herein at any time without notice, and CAVIUS Aps does not make any commitment to update the information contained herein. All the trademarks listed herein are owned by their respective owners. Copyright © CAVIUS Aps.

Developed by CAVIUS Aps, Jens Juuls Vej 28 K, DK-8260  
Manufactured in P.R.C.

Contact: CAVIUS Ltd, Edinburgh, Scotland, EH3 9DQ  
[uksales@cavius.com](mailto:uksales@cavius.com) [www.cavius.com](http://www.cavius.com)

